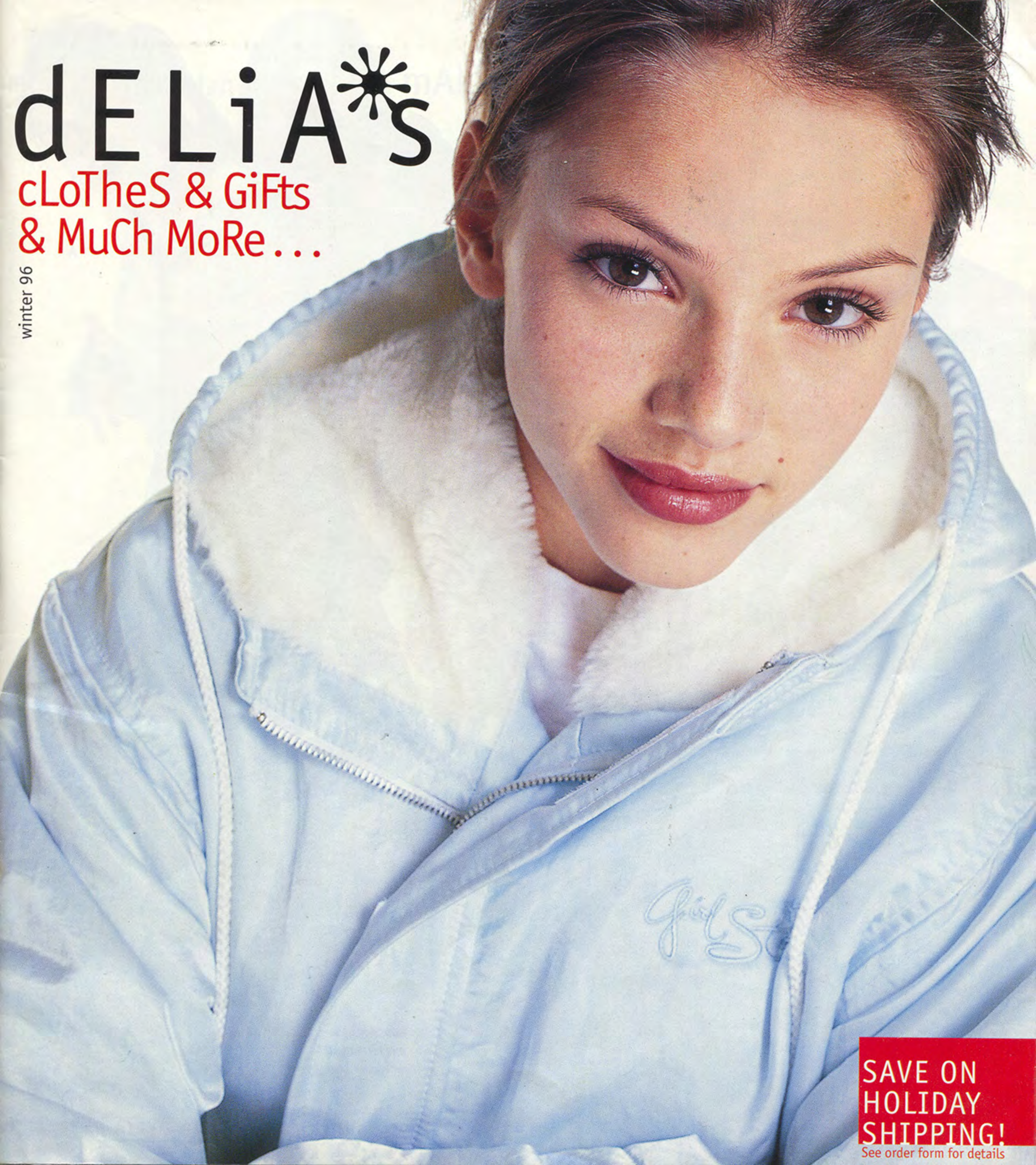


# dELiA\*s

cLoTheS & GiFts  
& MuCh MoRe...

winter 96



**SAVE ON  
HOLIDAY  
SHIPPING!**

See order form for details





A

jeans page 15  
sneakers page 27  
nail polish page 24

TO ORDER CALL **1-800-DELIA NY**



mOrE dReAmY tHan

mAkInG

sNow anGels.



B

C



B

C



A

**A. CLOUD NINE JACKET** Cozy jacket in nylon. Girlstar logo embroidered on chest. Two front zippered pockets. Faux fur-lined hood with drawstring. Velcro® tabs along front zipper, at cuffs and at natural waist seam for better fit. Quilted lining. About 25" long. By Girlstar. Color: light blue. Sizes: S, M, L. Imported.

**P10003** CLOUD NINE JACKET \$120

**B. ORBIT TEE** Short-sleeved cotton tee with orbit screen print and dELIA's logo. By dELIA's. Color: white. Sizes: S, M, L, XL.

**P07010** ORBIT TEE \$20

**C. TRACK PANTS** Athletic-style pants in polyester with white side stripes. Two side pockets. Front leg seams, back leg zippers. Elastic waistband with nylon drawstring. About 39" long with 30" inseam. By Dollhouse. Color: navy blue. Sizes: S, M, L, XL.

**P03041** TRACK PANTS \$48

necklace page 30  
sneakers page 27





necklace page 30



A

A

necklace page 29  
belt page 33  
jeans page 15  
boots page 27  
nail polish page 24

C



**B****A****C****B**

**A. RAINBOW VELOUR SHIRT** Long-sleeved stretch-velour shirt in cotton-poly blend. Rainbow stripes across chest and back and around arms. V neck. About 22" long. By Free People. Colors: blue, black. Sizes: S, M, L. Imported.

**P05035 RAINBOW VELOUR SHIRT \$48**

**B. BULLDOG SWEATSHIRT** Hooded cotton-blend sweatshirt with Bulldog logo on chest. Zip front, banded cuffs. Two front pockets, cozy fleece inside. About 21" long. By Bulldog. Color: black. Sizes: SM, ML.

**P05032 BULLDOG SWEATSHIRT \$36**

**C. SOHO PANTS** Ribbed pull-on pants in acetate-Lycra® blend. Flared bottoms. Elastic waistband. About 37" long with 29" inseam. By Az Iz. Color: black. Sizes: S, M, L.

**P03023 SOHO PANTS \$38**

backpack page 26  
tee page 15  
boots page 27  
nail polish page 24

**C****B****C**

mOrE aPTiTudE tHaN aTTitUdE.

TO ORDER CALL **1-800-DELIA NY**

**A. SCOOTER SWEATER** Acrylic sweater with stripes across chest and sleeves. Crew neck. About 21" long. By 26 Red Sugar. Colors: navy, brown. Sizes: S, M, L. Imported.

**P05031** SCOOTER SWEATER \$44

**B. GOLD RUSH PANTS** Pin-wale cotton-corduroy hipbudders in navy and rust windowpane check. Two front welt pockets. Front zipper. About 40" long with 30" inseam. Roxy by Quiksilver. Color: cream. Sizes: 3/4, 5/6, 7/8, 9/10.

**P03028** GOLD RUSH PANTS \$50



A



B



necklace page 30  
corduroys page 16  
nail polish page 24



moRe SKi thAn sLaloM, mORe mYtH thAN MouNtAin.



necklace page 30  
sneakers page 27



TO ORDER CALL **1-800-DELIA NY**



**A. BUGGIRL TEE** Short-sleeved tee in cotton-poly blend with snowboarding Buggirl screen print. By Buggirl. Color: light blue. Sizes: SM, ML.

**P07009** BUGGIRL TEE \$20

**B. SNOW TEE** Short-sleeved, polyester ringer tee with embroidered design on chest. By Dollhouse. Colors: gray, light blue (see page 50). Sizes: S, M, L.

**P04095** SNOW TEE \$24

**C. BOY SWEATER** Oversized, long-sleeved cotton sweater with stripes across chest and back and around arms. About 27" long. By Cotton Emporium. Color: blue. Sizes: S, M, L, XL.

**P05038** BOY SWEATER \$46

**D. WIDE-LEG JEANS** Cotton-denim jeans with two front and two back pockets. Zip fly and snap closure. About 42" long with 30" inseam. By Carter's. Color: blue denim. Waist sizes: 26", 27", 28", 29", 30", 31", 32".

**P03038** WIDE-LEG JEANS \$38



A

D



B

D

tee page 51  
sneakers page 27

necklace page 30  
sneakers page 27  
nail polish page 24



C



A



B



D



A

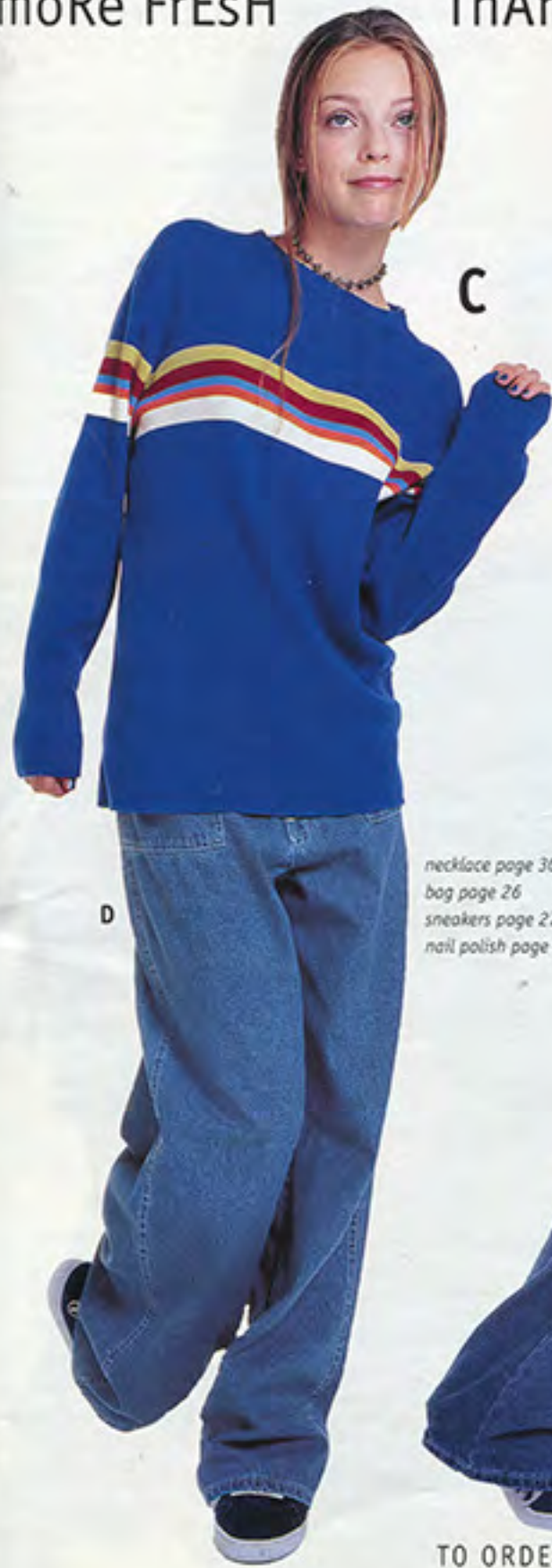
D

tee page 51  
nail polish page 24



moRe FrEsH

ThAn A nEwLy FaLLEn SnOwBoarDeR.



necklace page 30  
bag page 26  
sneakers page 27  
nail polish page 24



TO ORDER CALL **1-800-DELIA NY**





boots page 27

**A. SCANDINAVIAN SWEATER** Long-sleeved wool sweater with turquoise, cream, and brown fair isle pattern. Ribbed V neck, sleeves and hem. About 21" long. By Free People. Color: red. Sizes: S, M, L. Imported.

**P05037 SCANDINAVIAN SWEATER \$59**

**B. FAIR ISLE TEE** Long-sleeved tee in cotton jersey with fair isle screen print around neckline. Front button placket. By Planet Claire. Colors: white, black. Sizes: S, M, L.

**P04099 FAIR ISLE TEE \$29**

**C. LOVEBUG CORDUROYS** Wide-leg horizontal corduroy pants in cotton-poly blend. Two front patch pockets. Zip fly and button closure. About 41" long with 31" inseam. Roxy By Quiksilver. Color: purple. Sizes: 3/4, 5/6, 7/8, 9/10, 11/12.

**P03036 LOVEBUG CORDUROYS \$54**

TO ORDER CALL **1-800-DELIA NY**





thAn tHeY tHInK,

mORe dARinG tHaN thEY kNOw.



boots page 27  
nail polish page 24

corduroys page 15  
nail polish page 24



## m0rE c0nTaGi0us

thAn A

**A. RAISINBERRY TEE** Short-sleeved, color blocked terry tee in cotton-Lycra® blend. By Joe's. Color: burgundy. Sizes: S, M, L.

**P04109 RAISINBERRY TEE \$29**

**B. KALEIDOSCOPE SHIRT** Long-sleeved button-front shirt in printed stretch nylon. Two-button cuffs. By 8-Track. Color: multi. Sizes: S, M, L. Imported.

**P04106 KALEIDOSCOPE SHIRT \$34**

**C. CABLE CARDIGAN** Space-dyed, cable-knit wool cardigan. Front zip with covered loop pull. About 22" long. By Free People. Color: multi. Sizes: S, M, L. (Note: Due to the unique dyeing process, patterns may vary.) Imported.

**P05033 CABLE CARDIGAN \$59**

**D. CARTER'S OVERALLS** Cotton-denim overalls with one large chest pocket and two back pockets, side tool slot and hammer loop. Adjustable straps, contrast stitching. About 42" long, waist to hem, with 32" inseam. By Carter's. Color: blue denim. Sizes: S, M, L.

**P03039 CARTER'S OVERALLS \$49**



necklace page 30  
ring page 31  
corduroys page 15  
nail polish page 24



# CaSe oF The GiGgLes.



tee page 15  
ring page 31  
shoes page 27

TO ORDER CALL **1-800-DELIA NY**





mOrE PowEr

CoRdS ThaN YOuR

**A. STARGAZER JACKET** Wide-wale, cotton-corduroy zip-front jacket with acrylic fleece at collar and cuffs. Quilted polyester lining. Two slash pockets. About 25" long. By Free People. Color: olive green. Sizes: S, M, L. Imported.

**P10002 STARGAZER JACKET \$75**

**B. LONG-SLEEVED TEE** Cotton-knit, crew neck tee. By Co-operative. Colors: aqua, purple, brown, orange, gray, white, black. Sizes: SM, ML.

**P07007 LONG-SLEEVED TEE \$19**

**C. 5-POCKET JEANS** Fitted, cotton-denim jeans with slightly flared bottoms. Belt loops. About 36" long with 30" inseam. By Bulldog. Color: blue denim. Sizes: 3/4, 5/6, 7/8, 9/10, 11/12.

**P03033 5-POCKET JEANS \$38**

**D. 5-POCKET CORDUROY** Fitted, pin-wale cotton corduroys with slightly flared bottoms. Belt loops. About 36" long with 30" inseam. By Bulldog. Color: burgundy. Sizes: 3/4, 5/6, 7/8, 9/10, 11/12.

**P03037 5-POCKET CORDUROY \$44**

**A**



**A**



**B**



**D**

**C**

necklace page 30  
tee page 8  
jeans page 16



oWn

GaRagE BanD.



**B**

**C**

*shoes page 27*



**B**

**D**

*shoes page 27  
nail polish page 24*



**B**

**C**

*shoes page 27  
nail polish page 24*



**A. GIRL TANK** Cotton tank with white topstitching. By Bulldog. Colors: burgundy, blue, orange, white, black. Sizes: SM, ML.

**P07006 GIRL TANK \$10**

**B. CARPENTER CORDUOYS** Cotton pin-wale corduroys with two front and two back pockets, side tool slot and hammer loop. Zip fly, belt loops. About 39" long with 30" inseam. By Bulldog. Colors: brown, blue. Waist sizes: 26", 27", 28", 29", 30", 31", 32", 34".

**P03027 CARPENTER CORDUOYS \$44**

**C. CARPENTER JEANS** Cotton-denim jeans with two front and two back pockets, side tool slot and hammer loop. Zip fly, belt loops, contrast stitching. About 39" long with 30" inseam. By Bulldog. Color: blue denim. Waist sizes: 26", 27", 28", 29", 30", 31", 32", 34".

**P0301 CARPENTER JEANS \$38**



necklace page 30  
boots page 27

MoRe HANdY tHaN A TrUcK fULL oF CARPEnTErs. MoRe





NecesSaRy than AiR.

MoRe eLEmEnTaL tHaN H2O.

TO ORDER CALL **1-800-DELIA NY**



MoRe ReLiaBle

ThAn tHe daY aFter



ring page 31  
jeans page 15

ring page 31  
boots page 27  
nail polish page 24



# ToMoRrow.



**A. SPACE-DYED TURTLENECK** Long-sleeved, space-dyed turtleneck in cotton-acrylic blend. By Minty Fresh. Color: melon. Sizes: S, M, L.

**P04114** SPACE-DYED TURTLENECK \$36

**B. CITY SKIRT** Long, A-line hipster skirt with front seam in poly-Lycra® blend. Two front pockets. Hidden back zipper. About 36" long. By Space Girlz. Color: black. Sizes: XS, S, M, L, XL.

**P02041** CITY SKIRT \$34

**C. PRESTON PLAID SHIRT** Long-sleeved, polyester button-front shirt in rust, navy and brown windowpane pattern. Single-button cuffs. By 26 Red Sugar. Color: white. Sizes: S, M, L.

**P04108** PRESTON PLAID SHIRT \$36

**D. POSTAL PANTS** Straight-legged, polyester pants with black side stripes. Zip fly and button closure. About 38" long with 30" inseam. By Madhouse. Color: steel blue. Sizes: XS, S, M, L.

**P03024** POSTAL PANTS \$49



necklace page 30  
tank page 16  
shoes page 27

shoes page 27  
nail polish page 24

TO ORDER CALL **1-800-DELIA NY**



**A. PHONY FUR SKIRT** A-line skirt in polyester pony fur. Zip fly and double snap closure. About 16" long. By Free People. Color: silver. Sizes: 3/4, 5/6, 7/8, 9/10. Imported.

**P02048 PHONY FUR SKIRT \$48**

**B. SILVER-STRIPE PANTS** Fitted pants in black-and-silver striped stretch polyester. Two front pockets. Zip fly and button closure. About 38" long with 29" inseam. By Unityb. Color: black/silver. Sizes: 3/4, 5/6, 7/8, 9/10.

**P03042 SILVER-STRIPE PANTS \$50**

**C. SHANGRI-LA SHIRT** Fitted shirt with colorful mitred stripes in cotton-acrylic blend. Black binding at keyhole neckline. By Minty Fresh. Color: red. Sizes: S, M, L.

**P04113 SHANGRI-LA SHIRT \$36**

**D. FANCY PANTS** Flared pants in soft polyester gabardine. Two front patch pockets. Zip fly with silver button closure. Contrast stitching. About 39" long with 30" inseam. By Dollhouse. Color: black. Sizes: 3/4, 5/6, 7/8, 9/10, 11/12.

**P03040 FANCY PANTS \$54**



**A**



**B**



necklace page 30  
bag page 26  
tee page 15  
boots page 27

necklace page 31  
tee page 15  
shirt page 22  
shoes page 27

mOrE



MYstEriOus

ThaN StRiPeS In A bArCoDe.



watch page 30  
shoes page 27  
nail polish page 24

ring page 31

TO ORDER CALL **1-800-DELIA NY**





mOre iNTrIGuinG tHAn a

SeCreT aDMireR.



**A. LEISURE SHIRT** Long-sleeved button-front shirt in polyester. Single-button cuffs. By Knitworks. Colors: black, brown (see page 39), white. Sizes: S, M, L.

**P04112 LEISURE SHIRT \$32**

**B. MACKENZIE SKIRT** Mitred striped skirt in black, turquoise and green polyester-Lycra® blend. Hidden back zipper, binding at waist. About 19" long. By Un Deux Trois. Color: turquoise. Sizes: S, M, L.

**P02047 MACKENZIE SKIRT \$38**

**C. TETRA DRESS** Short-sleeved corduroy dress in cotton-poly blend. Square neck, side vents. Hidden back zipper. About 34" long. By Radio Fiji. Color: blue. Sizes: XS, S, M, L.

**P01096 TETRA DRESS \$50**

**D. LISA BOOTS** Tall, side-zip boots with adjustable buckle at ankle and calf. About 16" tall. Synthetic materials. Color: black. In women's whole and half sizes 5-9, 10. Imported.

**P14050 LISA BOOTS \$44**

nail polish page 24





C

D

necklaces page 30, 31  
nail polish page 24



C



**A. LIPSTICK** Six lipsticks in a range of shades. No animal testing, no animal products. By dELIA\*s. Choose from: kryptonite green, silver ice, blue illusion, arctic blue, brown sugar and metallic vamp.

**P2603 LIPSTICK** \$ 5

ORDER ANY THREE FOR \$12

ORDER ALL SIX FOR \$20

**B. NAIL POLISH** Fifteen bold and beautiful colors. .5 fl. oz. each. By dELIA\*s. Choose from: metallic silver, cast iron, joe brown, copper tone, red delicious, sour grapes, pixie purple, lavender ice, slipper pink, stardust sparkle, serpent teal, malachite green, new blue, surf blue, midnight blue.

**P2600 NAIL POLISH** \$ 5

ORDER ANY FIVE FOR \$18

ORDER ANY TEN FOR \$32

**C. FLANNEL PAJAMAS** Cotton-flannel pajamas in pink, blue, and white floral print. Button-front top has notched collar. Roxy logo embroidered on chest pocket. Wide-leg pants have drawstring waist. Top is about 25" long. Bottoms are about 39" long with 27" inseam. Roxy by Quiksilver. Color: light blue. Sizes: S, M, L. Imported.

**P08020 FLANNEL PAJAMAS** \$46

**D. GIFT SET** An assortment of your favorite dELIA\*s make-up in our 3D cosmetic bag. Each set includes a silver sparkle mirror, silver eyeshadow, silver ice lipstick, metallic vamp lipstick, sour grapes nail polish and serpent teal nail polish. By dELIA\*s.

**P26005 GIFT SET** \$29

**E. 3D BAG AND MIRROR** Zippered cosmetic bag in 3D vinyl. Comes with silver sparkle mirror. Bag is about 6" x 5", mirror is about 3" in diameter. Color: clear. By dELIA\*s.

**P26006 3D BAG AND MIRROR** \$16



C







m0rE mAKe-uP tHaN mAde uP.





**A. BOWLING BAG** Zippered, vinyl bag with red panels and white stripes and piping. 12" straps reinforced with metal. Flaunt logo embroidered on front. About 10" x 9". By Flaunt. Color: blue.

**P18036 BOWLING BAG** \$39

A



B



**B. CARTOON LUNCH BOX** Metal lunch box with colorful cartoon design. Black plastic handle and metal buckle closure. About 6" X 8 1/2". By Sparkle Plenty. Color: multi. Imported.

**P18032 CARTOON LUNCH BOX** \$16

**C. TUNNEL BACKPACK** Roomy backpack in PVC-coated nylon. Black patent PVC piping, light-blue and white design. Top zipper, 32" adjustable nylon straps. About 12" X 14". Sputnik by Brady Archment. Color: black.

**P18029 TUNNEL BACKPACK** \$42

C



D



**D. RAINBOW BAG** Vinyl bag with rainbow arch design on front. Black patent panel and back, white piping. Top zipper. 12" handles and 45" adjustable nylon shoulder strap. About 12" x 12". By Roma. Color: black. Imported.

**P18035 RAINBOW BAG** \$15

**E. CARGO BAG** Cotton-canvas bag with 50" adjustable shoulder strap. Top flap with zippered pocket opens to main zippered compartment, two smaller zippered pockets and one Velcro® pocket. One large back pocket. Decorative buckle closure has snap-down flap on main compartment. Hang tab. About 11" X 14". By Yak Pak. Color: army green. Imported.

**P18033 CARGO BAG** \$30

E



E



**F. MESSENGER BAG** Vinyl messenger bag with stripe design, "Dawls" logo and 45" adjustable shoulder strap. Top flap opens to two lined compartments. One zippered back pocket. About 10" X 14". By Dawls. Colors: black, green.

**P18030 MESSENGER BAG** \$42

F



F





# mArchInG bAnD aT BaGGaGe cLaiM.



**G. LEATHER LOAFERS** Square-toed loafers with 2" heel. Leather. Color: black. In women's whole and half sizes 5-9, 10. Imported.

**P14043 LEATHER LOAFERS \$36**

**H. SIDE-ZIP BOOTS** Square-toed boots with 2" heel. Side zipper. Synthetic materials. Color: black. In women's whole and half sizes 5-9, 10. Imported.

**P14044 SIDE-ZIP BOOTS \$36**

**I. JILL SHOES** Wingtips with lug sole. 1 1/2" heel. Synthetic materials. Colors: black/white, black/black. In women's whole and half sizes 5-9, 10. Imported.

**P14045 JILL SHOES \$30**

**J. T-STRAP SHOES** Two-buckle T-strap shoes with reinforced stitching at square toe. 2" heel. Synthetic materials. By Wanted. Colors: brown, black. In women's whole and half sizes 6-9, 10. Imported.

**P14047 T-STRAP SHOES \$32**

**K. CHELSEA SHOES** Oxfords with white topstitching, lug sole. 2" heel. Synthetic materials. Colors: brown, black. In women's whole and half sizes 5-9, 10. Imported.

**P1438 CHELSEA SHOES \$28**

**L. ETHELS** Suede sneakers with rubber soles. Removable cushioned insole. By Vans. Colors: brown, navy. In women's whole and half sizes 5-9, 10. Imported.

**P14046 ETHELS \$54**

**M. LISA BOOTS** Tall, side-zip boots with adjustable buckle at ankle and calf. Synthetic materials. About 16" tall. Color: black. In women's whole and half sizes 5-9, 10. Imported.

**P14050 LISA BOOTS \$44**

**N. CLAUDIA SHOES** Leather platform wedge shoe with adjustable side buckle. About 2 1/2" heel. By dELIA\*s. Color: black. In women's whole and half sizes 5-9, 10. Imported.

**P14048 CLAUDIA SHOES \$39**

**O. STOMP BOOTS** Durable leather lace-ups with pull tab. Cemented rubber bottom. Rounded toe. About 6". dELIA\*s by NaNa. Color: black. In women's whole and half sizes 5-9, 10. Imported.

**P14049 STOMP BOOTS \$79**

TO ORDER CALL **1-800-DELIA NY**



**A. LAVA LAMP** Electric lava lamp with black casing. Comes with light bulb and instructions for use. 90 day manufacturer's warranty. About 16" high with 4" base. Color: green.

**P20024 LAVA LAMP** \$55

**B. FIDO FRAME MAGNETS** Magnets are cut out to feature your favorite pal. Fits over 3" x 3" picture. Each set includes dog bone frame, doghouse, fire hydrant and tinklin' doggy. Color: assorted.

**P20022 FIDO FRAME MAGNETS** \$16

**C. ANIMAL MARKERS** Odorless, waterbased marker set features farm animal-shaped caps. About 3" long. Each packaged set includes cat with yellow ink, pig with green ink, cow with brown ink, bunny with blue ink, dog with green ink, frog with pink ink. Imported.

**P21028 ANIMAL MARKERS** \$12

**D. DELIA'S NOTEBOOK** Spiral-bound unlined notebook with dELIA's logo printed on iridescent cover. About 4" x 6". By dELIA's. Color: multi.

**P20025 DELIA'S NOTEBOOK** \$ 8

**E. PATCH SET** Embroidered iron-on patches can be applied to just about anything. Each set includes green frog, multi-colored butterfly, and pink feet. About 3" by 3". Color: assorted. Imported.

**P21026 PATCH SET** \$ 8

**F. BEND-A-FAMILY** Flexible family figures in rubber. About 2"-4" tall. Each set includes mother, father, girl and boy. Color: multi. Imported.

**P21027 BEND-A-FAMILY** \$ 8



more imaginative than







G



H



I



**G. LADYBUG CLOCK** Ladybug clock with second hand. About 5" top to bottom. Suction cup on back. Battery-operated. Color: red. Imported.

**P20021 LADYBUG CLOCK** \$20

**H. FOOT FRAME** Painted silver frame in the shape of a foot. About 4" x 6". Holds 2" x 3" picture. Color: silver. Imported.

**P20019 FOOT FRAME** \$16

**I. TUB STOPPERS** Rubber bath tub stoppers attach to plastic animal figures with a 12" ball chain. Colors: blue shark, yellow duck. Imported.

**P20023 TUB STOPPERS** \$ 7

**J. BEAD KIT** Design your own beaded jewelry. Each set includes nine seed bead colors, two beading needles, nymo thread and instructions. Case is about 4" x 3". Color: multi. Imported.

**P19081 BEAD KIT** \$12

**K. CANDLES** Handmade wax candles in two colorful designs. Wick burns inside core and illuminates outside patterns. Reusable. About 4" in diameter. Colors: blue with butterfly scene, red with floral scene. Imported.

**P20020 CANDLES** \$12

**L. JUGGLING SET** Hand-made, multi-colored juggling balls in rubber. Each set includes three balls in a clear plastic drawstring pouch and instructions. Balls are about 3" in diameter. Color: multi.

**P21029 JUGGLING SET** \$15

a RhInoceRos lEt lOosE iN a CrOwDed LunChRoOm.



J



K



L



TO ORDER CALL **1-800-DELIA NY**



**A. BUTTERFLY CHOKER** Metal link necklace with rhinestone butterfly pendant. Clasp closure. About 18" long. By Uccicucci. Color: sparkle.

**P19078 BUTTERFLY CHOKER \$18**

**B. BALL CHAIN NECKLACE** Silver-toned ball chain to be worn as a choker. About 42" long. Adjustable. By dEliA\*s. Color: silver.

**P19074 BALL CHAIN NECKLACE \$ 5**

**C, D. BARBED WIRE JEWELRY** Adjustable jewelry composed of metal links that look like barbed wire.

**C. NECKLACE** Spring clasp closure. About 16" long. **D. BRACELET** Spring clasp closure. About 8" long. Both by Apex. Color: pewter. Imported.

**P19062 BARBED WIRE NECKLACE \$14**

**P19063 BARBED WIRE BRACELET \$ 9**

**E. DICE BRACELET** Encased dice photos set on linked sterling-plated metal. Hinge-clasp closure. About 7" long. By Winky & Dutch. Color: multi.

**P19073 DICE BRACELET \$14**

**F. PETAL WATCH** Stainless steel watch with petal frame and adjustable mesh bracelet. Water resistant. Battery-operated. By Berry Jewelry. Color: silver. One size fits all. Imported.

**P19080 PETAL WATCH \$48**

**G. BUTTERFLY CHARM BRACELET** Metal chain bracelet has butterfly and flower charms. Adjustable. Clasp closure. About 7" long. Color: silver. One size fits all.

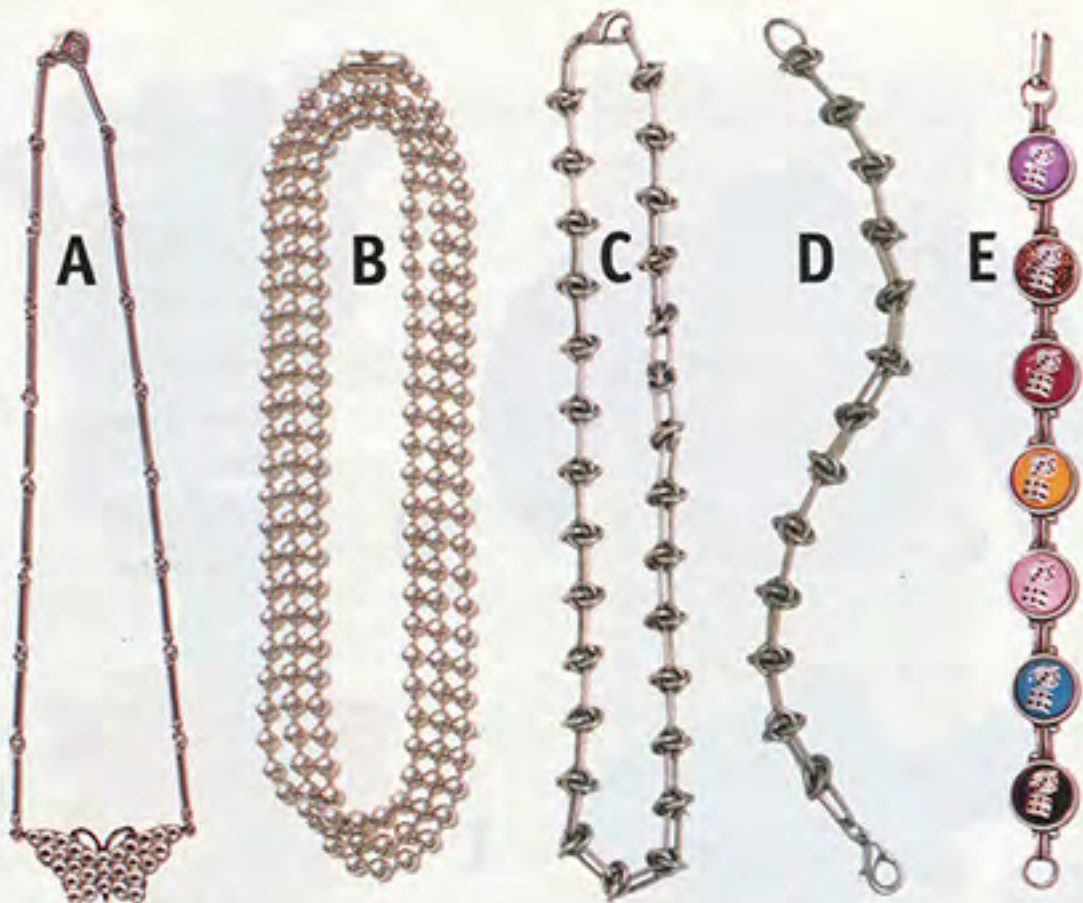
**P19077 BUTTERFLY CHARM BRACELET \$12**

**H. CHARM BRACELET** Metal chain bracelet has hardware charms. Adjustable. Clasp closure. About 7" long. Color: silver. One size fits all.

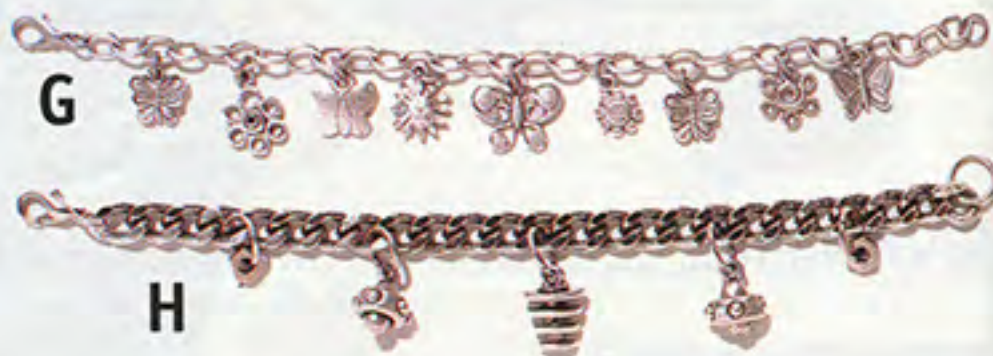
**P19076 CHARM BRACELET \$12**

**I. SPARKLE FLOWER BARRETTE** Metal barrettes with enameled flower design and sparkly center. Colors: green, blue, purple.

**P17037 SPARKLE FLOWER BARRETTE \$ 6 PAIR**



mOrE cHArMInG tHAn LUCKY.





**J****K****L**

**J. HARMONICA NECKLACE** Working mini harmonica (1 1/2" long) hangs from a 30" silver-toned ball chain. By Uccicucci. Color: silver.

**P19072 HARMONICA NECKLACE \$18**

**K. SEA GLASS NECKLACE** Frosted glass ball set in three metal petals. Charm hangs from 15" nickel ball chain. Adjustable. By Double Happiness. Colors: orange, clear, green, blue, purple.

**P19069 SEA GLASS NECKLACE \$15**

**L, M. DISCO BALL JEWELRY** Crystal rhinestones are set in nickel ball frames. **L. NECKLACE** Rhinestone ball hangs from 15" nickel chain. **M. EARRINGS** Rhinestone balls drop from surgical steel hooks. Both by Double Happiness. Color: sparkle.

**P19067 DISCO BALL NECKLACE \$22**

**P19068 DISCO BALL EARRINGS \$20**

**N. CROWN JEWEL RING** Lucite ball set in metal petals on wide, adjustable metal band. By Deluxe. Colors: cherry red, burnt orange, lime green, deep purple.

**P19066 CROWN JEWEL RING \$10**

**O. TINSEL RING** Tinsel ring set on adjustable metal band. By Uccicucci. Color: sparkle. One size fits all.

**P19075 TINSEL RING \$ 7**

**P. COMPASS RING** Working compass set on an adjustable, silver-toned band. By Deluxe. Color: silver.

**P1954 COMPASS RING \$14**

**Q. WATCH RING** Digital bubble-watch ring shows time, seconds and date. Adjustable plastic band. Battery-operated. Color: blue. One size fits all. Imported.

**P19079 WATCH RING \$10**

**R. GUMBALL RING** Large lucite ball set on adjustable metal band. Colors: red, yellow, blue, purple. Imported.

**P19070 GUMBALL RING \$ 5**

**S. GARDEN RING** Hand-painted flowers encased in glass with metal oval frame on wide metal band. Adjustable. By Deluxe. Choose from: red rose, orange marigold, purple violet, yellow daffodil.

**P19065 GARDEN RING \$10**

**O****M****N****P****Q****R****S**

TO ORDER CALL **1-800-DELIA NY**



**A. SILK BOXERS** Generously cut silk boxers with a wide waistband. Colors: green, red, navy, black. Unisex sizes: M(32-34), L(36-38).

**P0809 SILK BOXERS** \$14

**B. C. FUNDERWEAR** Screenprinted snowman on cotton underwear set. **B. TOP** Tank top with decorative edging and bow accent. **C. BOTTOMS** Bikini bottoms with full back coverage. Both by Hippodama. Color: white. Sizes: S, M, L.

**P09015 FUNDERWEAR TANK** \$20

**P09016 FUNDERWEAR BOTTOMS** \$12

**ORDER THE SET FOR \$29**

**D. FUR FLAP HAT** Faux fur hat in acrylic with ear flaps. By Pleasant Pheasant. Colors: white, black. One size fits all. Imported.

**P15024 FUR FLAP HAT** \$23

**E. STAR HAT** Acrylic ski hat with embroidered star logo in front (in white) and back (in black). By Girlstar. Color: black. One size fits all.

**P15023 STAR HAT** \$20

**F. BUTTERFLY BASEBALL CAP** Baseball hat with multi-colored butterfly embroidery. By Tasty. Color: black. One size fits all.

**P15025 BUTTERFLY BASEBALL CAP** \$22

**G. TASTY BELT** Webbed cotton-canvas belt with clip buckle. Embroidered Tasty logo and bear. About 1" wide. By Tasty. Colors: navy, white. One size fits all.

**P16023 TASTY BELT** \$12



mORe nEEdEd tHAn nEedY. MorE GiFtEd



shirt page 43

TO ORDER CALL **1-800-DELIA NY**



**H****I**

**H. TWO-PRONG BELT** Leather belt with two-prong metal buckle. By dELIA\*s. Colors: black, brown. Sizes: 28", 30", 32", 34", 36". Imported.

**P16024 TWO-PRONG BELT \$18**

**I. DINER BELT** Sparkly vinyl on recycled rubber belt. Adjustable seat belt buckle. By Little Earth. Color: sparkle. Sizes: XS, S, M, L, XL.

**P16025 DINER BELT \$38**

**J. RAINBOW MITTENS** Bright striped mittens in acrylic. By Tasty. Color: multi. One size fits all.

**P15027 RAINBOW MITTENS \$16**

**K. RAINBOW HAT** Bright striped hat in acrylic. By Tasty. Color: multi. One size fits all.

**P15026 RAINBOW HAT \$23**

**L. DRAGON MITTENS** Striped wool mittens with dragon eyes, nose and tongue. Color: multi. One size fits all. Imported.

**P15028 DRAGON MITTENS \$16**

**M. IRON-ON TEE** Do-it-yourself tee in cotton. Each set includes white tee, sheet of blue velvet decals, and instructions. By Living Doll. Color: white. One size fits all.

**P07012 IRON-ON TEE \$20**

tHaN GiVen. mOrE PreSEnT tHAn FuTuRe.

**J****K****L****M**



**A. AUDREY DRESS** Sleeveless A-line dress in polyester velveteen. Satin trim around scooped neck, armholes and at empire waist. Hidden back zipper. About 32" long. By Planet Claire. Color: purple. Sizes: XS, S, M, L.

**P01089 AUDREY DRESS \$52**

**B. DAISY LACE DRESS** Shift dress in polyester with floral lace overlay. V neck. About 33" long. By Swing. Color: black. Sizes: S, M, L.

**P01099 DAISY LACE DRESS \$39**

**C. DECO SHIRT** Long-sleeved shirt in polyester panne velvet with geometric print in orange, purple, burgundy and beige. Front button placket. By Madhouse. Color: burgundy. Sizes: S, M, L.

**P04110 DECO SHIRT \$42**

**D. "ULTRA" PANTS** Sueded rayon pants. Zip fly with double-snap closure. One front welt pocket. About 41" long with 31" inseam. By Necessary Objects. Color: beige. Sizes: 3/4, 5/6, 7/8, 9/10.

**P03026 "ULTRA" PANTS \$45**



**A**



**B**



**C**



**D**

necklace page 30  
ring page 31  
shoes page 27  
nail polish page 24

earrings page 31  
bracelet page 30  
shoes page 27  
nail polish page 24

mOrE fLIrTatiOus tHaN YoUr BeSt fRiEnD's bR0tHeR.





C

D

shoes page 27  
nail polish page 24



c

D

TO ORDER CALL **1-800-DELIA NY**



# mOrE TrICKY ThAn PaRAlLeL



A



B

C

nail polish page 24

ring page 31  
sneakers page 27  
nail polish page 24

c



PaRkInG oN A CuRvE.



D

**A. STAR-SKI SWEATER** Long-sleeved sweater in acrylic-wool blend. Black side and sleeve panels, yellow stars on sleeves. About 22" long. By Free People. Color: red. Sizes: S, M, L. Imported.

**P05034 STAR-SKI SWEATER** \$58

**B. STRIPED TEE** Short-sleeved crew-neck tee in poly-Lycra® blend. By Un Deux Trois. Colors: red, blue. Sizes: SM, ML.

**P04101 STRIPED TEE** \$24

**C. CITY SKIRT** Long, A-line hipster skirt with front seam in poly-Lycra® blend. Two front pockets. Hidden back zipper. About 36" long. By Space Girlz. Color: black.

**P02041 CITY SKIRT** \$34

**D. SCHOOLHOUSE DRESS** Short-sleeved, collared dress in poly jacquard knit. Two front pockets with buttons. Front button placket. About 33" long. By 26 Red Sugar. Color: brick red. Sizes: S, M, L.

**P01083 SCHOOLHOUSE DRESS** \$42



tee page 15

TO ORDER CALL **1-800-DELIA NY**



# mOrE mArveLouStHaN SeA MonKeYs

**A. SUEDED JACKET** Fitted front-zip jacket in rayon with cotton backing. Front princess seams. About 23" long. By dELIA\*s. Color: dark brown. Sizes: S, M, L.

**P10005 SUEDED JACKET \$54**

**B. WINKING GIRL TEE** Short-sleeved cotton tee with "winking girl" screen print. By 26 Red Sugar. Color: green. Sizes: S, M, L, XL.

**P07008 WINKING GIRL TEE \$20**

**C. DIGITAL PANTS** Flared pants in printed polyester crepe. Hidden side zip. About 40" long with 31" inseam. By Wanted Clothing. Color: multi. Sizes: 3/4, 5/6, 7/8, 9/10.

**P03043 DIGITAL PANTS \$44**

**D. SHERPA JUMPER** Comfy jumper in cotton-poly fleece. About 32" long. By Lucie. Colors: moss green, burgundy. Sizes: S, M, L, XL.

**P01095 SHERPA JUMPER \$39**



ring page 31  
shoes page 27  
nail polish page 24



dOING the BackStrOkE In A GLASs.



shirt page 22  
shoes page 27  
nail polish page 24

necklace page 31  
tee page 15

TO ORDER CALL **1-800-DELIA NY**





mOrE PeRfEcT ThAn MiSsiNG



A



A

*watch page 30  
shoes page 27  
nail polish page 24*

TO ORDER CALL **1-800-DELIA NY**





B



C

tee page 15  
shirt page 22  
shoes page 27



A



C



B

**A. JAVA DRESS** Short-sleeved, collared dress in cotton fleece with front pouch pocket. Front zipper with silver-toned pull. About 34" long. By Girlstar. Color: brown. Sizes: S, M, L, XL.

**P01100** JAVA DRESS \$49

**B. KEYHOLE SHIRT** Long-sleeved, fitted shirt in nylon-Lycra® blend with keyhole neckline. Dark purple contrasting trim. By Malibu. Color: lavender. Sizes: SM, ML.

**P04097** KEYHOLE SHIRT \$35

**C. SQUIGGLE SKIRT** Long straight skirt in patterned, double-knit polyester. Hidden back zipper. About 38" long with 17" back slit. By Necessary Objects. Color: lavender. Sizes: XS, S, M, L.

**P02045** SQUIGGLE SKIRT \$34

C



MoRe rOMaNTIc



**A**



**B**

*jeans page 15  
shoes page 27*

TO ORDER CALL **1-800-DELIA NY**



ThAn

tReEs.

C



ring page 31  
jeans page 15  
nail polish page 24

D



shoes page 27

**A. CHLOE DRESS** Velour shift in polyester with decorative tie-front at empire waist. Floral embroidery on chest. Round neck. About 34" long. By Monster Girl. Color: light blue. Sizes: S, M, L.

**P01097** CHLOE DRESS \$39

**B. GOLDFISH SHIRT** Long-sleeved shirt with woodland scene in printed stretch nylon. Two-button cuffs. By 8-Track. Color: multi. Sizes: S, M, L. Imported.

**P04105** GOLDFISH SHIRT \$38

**C. SPARKLE SPACE-DYE SHIRT** Long-sleeved, space-dyed shirt in cotton-lurex blend. Split keyhole neckline. By Free People. Color: light blue. Sizes: S, M, L.

**P04107** SPARKLE SPACE-DYE SHIRT \$34

**D. UPSY-DAISY DRESS** Short-sleeved, collared, border-print dress in polyester crepe. Front button placket. About 34" long. By Wanted Clothing. Color: brown. Sizes: S, M, L. Imported.

**P01094** UPSY-DAISY DRESS \$48





MoRe APPEALInG ThAn

PumPkIn

**A. BETTY SWEATER** Short-sleeved, color-blocked sweater in wool-nylon blend. Roxy logo embroidered on chest. Hidden back zipper. About 21" long. Roxy by Quiksilver. Color: blue. Sizes: S, M, L. Imported.

**P0530 BETTY SWEATER** \$48

**B. IMPATIENT DRESS** Short-sleeved floral shirtdress in polyester crepe. Notched collar. About 33" long. By Un Deux Trois. Color: black. Sizes: XS, S, M, L, XL.

**P01092 IMPATIENT DRESS** \$44

**C. DRUSCILLA DRESS** Cap-sleeved A-line dress in crocheted acrylic. Polyester slip is attached. About 33" long. By Un Deux Trois. Color: black. Sizes: S, M, L.

**P01093 DRUSCILLA DRESS** \$44

**D. BRIGHT TIGHTS** Nylon tights in four colors. By Hot Steps. Colors: red, purple, green, black. One size fits all. Imported.

**P12020 BRIGHT TIGHTS** \$ 8



A



watch page 30  
ring page 31  
pants page 21  
nail polish page 24



PIE oN A

PrEtTy PiE PLAtE.

B



C



D

necklace page 31

shoes page 27  
nail polish page 24



**A. ELLIE VEST** Wool vest with green and gray design across chest and back. Ribbed V neck, armholes and hem. About 19" long. By Free People. Color: black. Sizes: S, M, L. Imported.

**P05036 ELLIE VEST \$44**

**B. MARTIANETTE TEE** Short-sleeved cotton tee with "martianette" screen print. By 26 Red Sugar. Color: white. Sizes: S, M, L, XL.

**P07001 MARTIANETTE TEE \$20**

**C. CARGO SKIRT** A-line skirt in cotton twill. Zip fly with button closure. Two side cargo pockets with Velcro® closure. About 16" long. By Dawls. Color: brown. Sizes: XS, S, M, L.

**P02044 CARGO SKIRT \$38**

**D. PUCK JACKET** Heavyweight nylon jacket with fluorescent orange stripes on chest. Two slash pockets. Front zip, single snap cuffs, side vents. About 23" long. By Unityrb. Color: black. Sizes: S, M, L.

**P10001 PUCK JACKET \$59**



**A**



**B**



**C**



**D**



**A**

necklace page 30  
jeans page 15  
nail polish page 24



mOrE CLeVeR ThAn A MoNsTeR Truck HaYRiDe.

**B**

necklace page 30  
jeans page 15

**D**

**C**

ring page 31  
sneakers page 27





**A. SHIRLEY DRESS** Short-sleeved stretch-velour dress in cotton-poly blend. Two front pockets. Light-blue accent on sleeves, collar and along hidden front zipper. About 32" long. By Dollhouse. Color: navy blue. Sizes: S, M, L.

**P01084 SHIRLEY DRESS** \$48

**B. ANGEL TEE** Short-sleeved cotton tee with sparkly "girly things" screen print. By Girly Things. Color: navy blue. Sizes: SM, ML.

**P07005 ANGEL TEE** \$20

**C. DIAMOND KNIT SKIRT** Long, A-line skirt in acrylic-poly jacquard knit. Elastic waistband. About 37" long. By Swing. Color: blue. Sizes: XS, S, M, L.

**P02042 DIAMOND KNIT SKIRT** \$34

**D. FUEL SHIRT** Short-sleeved johnny collar shirt in polyester terry with red and white stripes. By Girls Rule. Color: blue. Sizes: S, M, L.

**P04111 FUEL SHIRT** \$36



A



B



C



D

bag page 26

mOrE sUPeRCHArGEd tHAn YouR

A



A







necklace page 29  
jeans page 15  
nail polish page 24

**B**



**C**

**D**

necklace page 30  
ring page 31  
sneakers page 27